



SANDAN *and* SPRINGSIDE *Bull Sale*

Saturday
FEBRUARY 13, 2021, 1 P.M.

New Location
STETTLER AGRIPLEX

Welcome



We would like to welcome all our friends and customers to the 24th Annual bull sale. Over the past two and a half decades, we are proud and truly blessed to have such a great array of repeat customers who we have grown to call friends... with several being of the third generation. I often wonder how many dollars of feeder cattle, sired by our bulls, have been transacted by the sires we have sold through our sale ring. This year shall be different, as the sale will be held at the Stettler Agri-plex.

Our program is based on a late fall calving season, facilitated by our children having taken different avenues in life ...

George continues to be the handy-man and work horse of our operation. Our cow herd is based on cow families that are predictable and consistent, so we know that the bulls we sell will be a benefit to your operation... something we are immensely proud of.

Plan to be a part of our annual event and help us celebrate a new year. The Springside bulls, partners in the sale, along with the SDC bulls are available for viewing at our farm prior the sale. Feel free to give Mike or myself a call with any questions as to which bulls are suitable for your breeding plans.

We appreciate your loyalty and friendship... our goal is to get your cows bred to our added-value sires.

Ursula

From The Desk at T-Bar

Welcome to the 24th Annual Sandan/Springside Charolais Bull Sale on Saturday, February 13, 2021 at a new location, the Stettler Agri-plex, Stettler, Alberta. For nearly a quarter century, this event has been the source of value-added sires for both breeders and commercial producers from across North America. The success of this sale is the large repeat customer base who have select their sires each year with confidence in the program and the customer service that comes with every bull that sells. With the two programs combined, this sale represents one of the largest offerings of Charolais bulls in the nation.

The Sandan offering is based on a fall calving program. These bulls are truly ranch raised... born on fall pasture, grown throughout the summer on grass then only brought in and supplemented a high roughage ration to prepare them for the sale. Many of these falls are just months from being classified as yearling. 2021 offers an exciting new sire group from the leading cow families that have made the Sandan breeding operation a success. Rugged and hairy, these bulls are bred and managed to be sound with longevity. These fall bulls with that extra dimension of maturity, can cover more cows, more ground and generally come out of their breeding pastures in better condition.

The Springside offering is packed full of exciting bull power! Whether you are a commercial producer looking for bulls to add pounds at weaning or a seedstock producer looking for that next great herd bull, this lineup of mostly polled bulls requires your scrutiny. Springside has proven over the past decade that they can produce a competitive product by having competed and won on a national level. The only fall show held in 2020 was Stockade Roundup in Lloydminster in which they dominated and swept the show. Mike will tell you that he prides his cow herd and its maternal strength and rightfully so... one needs to see this cow herd in full milk on grass. The bulls come to you diverse in the freshest genetics offered power bulls, heifer bulls and some that will fit both pastures!

The bulls will be on display, the afternoon and evening the day before the sale at the Agri-plex but feel free to view the bulls anytime prior at Sandan in natural surroundings. Do not hesitate to give Ursula or Mike a call to discuss their offering as to which bulls would be most suitable for your breeding needs. Plan to be with us on February 13th whether it be in person or online. We all know the advantages of using a Charolais bull, especially when we sell the calves each fall.

During these times, feel free to call anyone on our T Bar C Team to discuss or purchase any of the cattle offered. We have graded each individual and will be pleased to assist in a professional and confidential manner.

Chris Poley



Chris Poley
306-220-5006



Shane Michelson
403-363-9973



Ben Wright
519-374-3335

24TH ANNUAL

SANDAN *and* SPRINGSIDE CHAROLAIS BULL SALE

**SATURDAY, FEBRUARY 13, 2021
1:30 P.M., STETTLER AGRIPLEX**

SALE DAY PHONES

Ursula Corpataux (403) 741-6114
Mike Panasiuk (250) 832-8209
Kale Gist (403) 741-7166
Barry Peril (204) 801-3546

SALE STAFF

Chris Poley, AUCTIONEER (306) 220-5006
Shane Michelson, RINGMAN (403) 363-9973
Ben Wright, RINGMAN (519) 374-3335

SALE CONSULTANTS

Roger Peters (403) 828-9815
Larry Toner (306) 834-7652

SCHEDULE OF EVENTS

FRIDAY, FEBRUARY 12, 2021

2:00 p.m. - 8:00 p.m.

Food, refreshments & cattle on display

SATURDAY, FEBRUARY 13, 2021

10:00 a.m. - Cattle available for viewing

12:00 p.m. - Lunch

1:30 P.M. - SANDAN / SPRINGSIDE BULL SALE

ONLINE VIEWING & BIDDING

www.dlms.ca Mark Shologan (780) 699-5082

VIDEOS

Videos of all the sale lots will be available for viewing prior to the sale at www.cattlevids.ca

TAKE-HOME CREDIT

Receive a \$250 credit if you take your bull(s) home on sale day.

SIGHT UNSEEN PURCHASE PROGRAM

Let us know what type of bull you are looking for, as well as a price range and we will do our best to purchase a bull on your behalf. If we cannot buy what you specify, we will not fill your order.

KEEP & FEED PROGRAM

We will keep your purchase until April 1, 2021 free of charge. All bulls returning to Springside &/ or Sandan must be insured.

INSURANCE

Monica Czech, Can. Farm Insurance (780) 318-3636

Terms: The terms of the sale are cash or cheque, payable at par at the sale location. The right of property shall not pass until after settlement has been made; no invoicing on buyers in attendance, unless previous arrangements have been made. Every animal sells to the highest bidder and in cases of disputes, the auctioneer's decision will be final. Current exchange rates will be announced sale day. All monies are in Canadian funds.

Bidding: Each animal will sell to the highest bidder... no by-bidding will be permitted. Disputes - Bidding will be reopened between the parties involved in dispute. If no further bidding is made, the buyer will be the person from whom the auctioneer accepted the last bid. The auctioneer's decision on all disputes will be final.

Announcements: All announcements made from the auction block will take precedence over the printed matter in the catalogue. Buyers are therefore cautioned to pay close attention to such disclosures.

Breeder's Guarantee: Should any bull fourteen (14) months of age or over fail to prove a breeder after being used on females known to be breeders, the matter shall be reported in writing to the seller within six (6) months following the date of purchase or six (6) months after the bull has reached fourteen (14) months of age. The seller will have the right and privilege of six (6) months to prove the bull a breeder. No guarantee is given that semen collected from the bull will freeze.

Exception Guarantee: In cases where the animal is subjected to any hormonal or surgical reproduction techniques after the sale, this guarantee shall be null and void.

Certificate of Registration: Each animal will carry papers issued by the Canadian Charolais Association. A certificate of registry duly transferred will be furnished to the buyer for each animal after payment has been made.

Phone, Mail, Wire Bids: Bidders unable to attend the sale may phone, wire or mail their bids and instructions to the sale managers, auctioneer or special representatives. Bids must be received in sufficient time prior to the sale.

Delivery: We will assist in arranging transportation wherever possible. Each animal becomes the risk of the purchaser as soon as sold.

Insurance: Will be available sale day. We strongly recommend that insurance is purchased for full value.

Liabilities: All persons attend the sale at their own risk. The seller, facility owner and sale manager assume no liability, legal or otherwise, for any accidents that occur. It is understood that T Bar C Cattle Co. (2013) Ltd. is acting only as a medium between buyer and seller and is not responsible for any failure on the part of either party to live up to his obligations. Neither does T Bar C Cattle Co. (2013) Ltd. assume any financial obligations to collect or enforce collection of any monies between parties and any legal action that may in exceptional cases be taken must be between the buyer and the seller. T Bar C Cattle Co. (2013) Ltd. assumes no responsibility for any credit extended by the seller to the buyer. The buyer must look to the seller for fulfillment of all guarantees and representations made hereunder.

Rights and Obligations: The above terms and conditions of the sale shall constitute a contract between the buyer and seller and be equally binding to both. Resale of animals following purchase in this sale shall constitute a separate transaction and the rights and obligations of the two parties connected thereto are not covered by the terms and conditions of this sale.

Errors: All announcements at sale time, written or oral, supercede any written material in the catalogue.





LOT 1

1

SDC GAGE 1G

MC805468	SDC 1G	JULY 15, 2019	DEHORNED WHITE
CHARHEAD'S MISTER MEL 24Z	CHARHEAD MISTER MEL 1X		
WRANGLER LEADER 15D	CHARLA MOORE TAKEOFF 7T		
SDC ALBA 6A	MERIT ROUNDUP 9508W		
	SDC LADY YAKIRA 89Y		
	KEYS ALL STATE 149X		
SDC BULLHORN 11B	SDC EASY ON THE EYES 29Z		
SDC ERICA 4E	HTA BRADACK 137Y		
SDC DORIS 13 CECILIA 13C	SDC ZITA 68Z		

PERF	BW	WW	EPDS	CE	BW	WW	YW	MILK	MTL
93	751		7.7	1.1	44	87	17	39	

- A stout, thick topped son of Wrangler Leader 15D
- Out of a first calf heifer going back to the great Barbie Doll family through SDC Pearl
- His sire, Leader, ranks in the top 15% of the breed for Calving Ease

2

SDC GAME DAY 2G

PMC805356	SDC 2G	JULY 18, 2019	POLLED WHITE
CHARHEAD'S MISTER MEL 24Z	CHARHEAD MISTER MEL 1X		
WRANGLER LEADER 15D	CHARLA MOORE TAKEOFF 7T		
SDC ALBA 6A	MERIT ROUNDUP 9508W		
	SDC LADY YAKIRA 89Y		
	SPARROWS DURANGO 585P		
SPARROWS CARACAS 230S	SPARROWS SYMPHONY 230L		
SDC YOGA 135Y	MXS VERMILLION 527R		
SDC HIP HOP 77T	SVY HIP HOP 228M		

PERF	BW	WW	EPDS	CE	BW	WW	YW	MILK	MTL
107	704		4.2	2.8	45	89	22	45	

- This Leader son going back to the SDC Hip Hop family comes to you with high carcass data
- Ranks in the top 20% of the breed for Fat and the top 30% for Rib-Eye.



LOT 2



3

SDCP **GO WEST** 3G

QMC805374	SDCP 3G	AUGUST 13, 2019	DEHORNED TAN
CHARHEAD'S MISTER MEL 24Z		CHARHEAD MISTER MEL 1X	
WRANGLER LEADER 15D		CHARLA MOORE TAKEOFF 7T	
SDC ALBA 6A		MERIT ROUNDUP 9508W	
		SDC LADY YAKIRA 89Y	
		HTA SENATOR 8130U	
HTA BRADACK 137Y		HTA BRIDGET (R) 577R	
SDCP BERNINA 306A		SUEDOIS	
SDCP PARIS 85W		CAVE MISS SWIZZLE 53R	

PERF	BW	WW	EPDS	CE	BW	WW	YW	MILK	MTL
90		707		3.4	3.1	48	96	20	45

- Out of Full French genetics on the mother's side
- Ranks in the top 15% of the breed for Carcass Weight and Rib-Eye and the top 25% for Yearling Weight
- A maternal brother, SDC Dodger 6D, was selected by Tyrell Bieganek, Edberg, AB

4

SDC **GAVIN** 4G

MC805355	SDC 4G	AUGUST 14, 2019	DEHORNED WHITE
CHARHEAD'S MISTER MEL 24Z		CHARHEAD MISTER MEL 1X	
WRANGLER LEADER 15D		CHARLA MOORE TAKEOFF 7T	
SDC ALBA 6A		MERIT ROUNDUP 9508W	
		SDC LADY YAKIRA 89Y	
		HTA SENATOR 8130U	
HTA BRADACK 137Y		HTA BRIDGET (R) 577R	
SDC CELESTE 22C		SVY FREEDOM PLD 307N	
SDC HOT STUFF 156T		SDC WHITE PEARL 14N	

PERF	BW	WW	EPDS	CE	BW	WW	YW	MILK	MTL
98		684		6.5	2.0	44	87	21	43

- Out of a hard-working Bradack daughter from the Celeste cow family based on donor female Barbie Doll





5

SDC GAMBLER 6G

QSMC805309	SDC 6G	AUGUST 15, 2019	SCURRED TAN
CHARHEAD'S MISTER MEL 24Z			CHARHEAD MISTER MEL 1X
WRANGLER LEADER 15D			CHARLA MOORE TAKEOFF 7T
SDC ALBA 6A			MERIT ROUNDUP 9508W
			SDC LADY YAKIRA 89Y
SVY FREEDOM PLD 307N			HFCC PLD EVOLUTION 5L
SDC DOMINIQUE 133S			SVY PURRFECT 184L
SDC MISS WENDY 72J			2UP PEUGEOT ET
			SDC MS GENERATION 404D

PERF	BW	WW	EPDS	CE	BW	WW	YW	MILK	MTL
97		712	EPDS	4.2	2.5	42	78	16	38

- Ranks in the top 20% of the breed for Fat
- Out of our top producing foundation cow full of longevity and predictability. She is the mother of SDC Dig Deep 16D, selected by Blue Acres Farm, Stettler; SDC Chester 25C at Armstrong Farms, Erskine; SDC Big Way 15B selected by Dale Tucker, Endiang and SDC Cherokee Promise 13A for Eric Haustein, Erskine.
- Daughters have been selected by Wrangler Charolais Farms, Westlock, Steeves Farm, Bluffton and Alta Pride Charolais, Chauvin, AB

6

SDC GUS 11G

PMC805537	SDC 11G	AUGUST 16, 2019	POLLED WHITE
CHARHEAD'S MISTER MEL 24Z			CHARHEAD MISTER MEL 1X
WRANGLER LEADER 15D			CHARLA MOORE TAKEOFF 7T
SDC ALBA 6A			MERIT ROUNDUP 9508W
			SDC LADY YAKIRA 89Y
HTA BRADACK 137Y			HTA SENATOR 8130U
SDC CHLOE 501C			HTA BRIDGET (R) 577R
SDC EASY ON THE EYES 29Z			MXS IRISH CREAM 973W
			SDC OLIVIA 125S

PERF	BW	WW	PE EPDS	CE	BW	WW	YW	MILK	MTL
94		721	PE EPDS	6.6	2.0	44	89	19	42

- This smooth fronted Leader son goes back to the Generation III cow family
- Ranks in the top 30% of the breed for Rib Eye





7

SDC GRAHAM 14G

PMC805354	SDC 14G	AUGUST 20, 2019	POLLED WHITE
WINN MANS SKAGGS 663X		MD ALI TRADE U1059	
SPARROWS CAMELOT 666D		WINN MANS BEVERLY 663S	
SPARROWS SYMPHONY 430A		WINN MANS LANZA 610S	
		SPARROWS SYMPHONY 230Y	
		MXS VERMILLION 527R	
MERIT ROUNDUP 9508W		MERIT YOLANDA 7244T	
SDC DORIS 11D		HTA BRADACK 137Y	
SDC BAILEY 134B		SDC OLD FASHIONED GIRL 16U	

PERF	BW	WW	EPDS	CE	BW	WW	YW	MILK	MTL
	108	779		3.7	1.8	55	117	19	46

- A rugged son of Sparrows Camelot out of a Merit Roundup daughter going back to Barbie Doll
- High performance combined with great carcass values
- Ranks in the top 2% of the breed for Yearling Weight, the top 10% for Weaning Weight and Carcass Weight and the top 15% for Rib-Eye and Marbling

8

SDC GO TIME 16G

MC805469	SDC 16G	AUGUST 21, 2019	DEHORNED WHITE
SOS HOME GROWN 15C		WINN MANS CHAVEZ 826Y	
SOS VESELKA PLD 124E		SOS SPRINGSIDE'S ADELE167	
SOS BABY GIRL 21B		CSS SIR NAVIGATOR 20Y	
		FFBB MOMMASGIRL PLD 930W	
		KEYS ALL STATE 149X	
SDC BULLHORN 11B		SDC EASY ON THE EYES 29Z	
SDC EMMA 30E		HTA BRADACK 137Y	
SDC BELINDA 154B		SDC SARIKA 4S	

PERF	BW	WW	EPDS	CE	BW	WW	YW	MILK	MTL
	98	752		4.1	1.3	45	87	15	38

- A heifer's first calf going back to the Madonna cow family
- His sire is a son of the great SOS Home Grown 15C





9

SDC GENERATOR 17G

MC805357 SDC 17G AUGUST 22, 2019 DEHORNED WHITE

WINN MANS SKAGGS 663X
SPARROWS CAMELOT 666D
 SPARROWS SYMPHONY 430A

HTA BRADACK 137Y
SDC BONITA 163B
 SDC ZARIA 119Z

MD ALI TRADE U1059
 WINN MANS BEVERLY 663S
 WINN MANS LANZA 610S
 SPARROWS SYMPHONY 230Y
 HTA SENATOR 8130U
 HTA BRIDGET (R) 577R
 SPARROWS CARACAS 230S
 SDC ALY 113U

PERF	BW	WW	EPDS	CE	BW	WW	YW	MILK	MTL
	96	652		2.6	3.1	54	115	27	54

- A high performance, high maternal Skaggs grandson with style and awesome data
- Ranks in the top 2% of the breed for Yearling and Carcass Weight, the top 3% for Total Maternal, the top 10% for Weaning Weight, Milk and Rib-Eye
- His mother is a top producing Bradack daughter going back to the French influenced Barbie family.

10

SDC GAME ON 18G

PMC805470 SDC 18G AUGUST 23, 2019 POLLED WHITE TWIN

SOS HOME GROWN 15C
SOS VESELKA PLD 124E
 SOS BABY GIRL 21B

HTA BRADACK 137Y
SDC ELVIRA 13E
 SDC HOT STUFF 156T

WINN MANS CHAVEZ 826Y
 SOS SPRINGSIDE'S ADELE167
 CSS SIR NAVIGATOR 20Y
 FFBB MOMMASGIRL PLD 930W
 HTA SENATOR 8130U
 HTA BRIDGET (R) 577R
 SVY FREEDOM PLD 307N
 SDC WHITE PEARL 14N

PERF	BW	WW	PE EPDS	CE	BW	WW	YW	MILK	MTL
	82			3.6	1.8	45	87	21	43

- A twin to SDC 19G out of a first calf heifer
- Ranks in the top 30% of the breed for Carcass Weight





LOT
11

11

SDC **GARGOYLE** 19G

PMC805472 SDC 19G AUGUST 23, 2019 POLLED WHITE TWIN

SOS HOME GROWN 15C
SOS VESELKA PLD 124E
SOS BABY GIRL 21B

HTA BRADACK 137Y
SDC ELVIRA 13E
SDC HOT STUFF 156T

WINN MANS CHAVEZ 826Y
SOS SPRINGSIDE'S ADELE167
CSS SIR NAVIGATOR 20Y
FFBB MOMMASGIRL PLD 930W
HTA SENATOR 8130U
HTA BRIDGET (R) 577R
SVY FREEDOM PLD 307N
SDC WHITE PEARL 14N

PERF	BW	WW	PEEPDS	CE	BW	WW	YW	MILK	MTL
84			3.6	1.8	45	87	21	43	

- Twin to SDC 18G selling as Lot 10
- Ranks in the top 30% of the breed for Carcass Weight

12

SDC **GASTON** 21G

PMC805358 SDC 21G AUGUST 24, 2019 POLLED WHITE

WINN MANS SKAGGS 663X
SPARROWS CAMELOT 666D
SPARROWS SYMPHONY 430A

SVY FREEDOM PLD 307N
SDC SARIKA 4S
RGP MADOONNA 2M

MD ALI TRADE U1059
WINN MANS BEVERLY 663S
WINN MANS LANZA 610S
SPARROWS SYMPHONY 230Y
HFCC PLD EVOLUTION 5L
SVY PURRFECT 184L
LHD CIGAR E46
RGP GLAMOR GIRL 20G

PERF	BW	WW	PEEPDS	CE	BW	WW	YW	MILK	MTL
95	675		4.7	2.0	46	93	20	43	

- A unique package for those looking for predictable longevity. The mother is a 14-year-old foundation female by Freedom and out of the Madoonna cow family
- Gaston ranks in the top 30% of the breed for Yearling Weight and Carcass Weight
- A maternal brother, SDC Nitro 28D, was selected by Paul Gusse Farms Ltd., Wetaskiwin, AB and a daughter was selected by Jay Dawn Farms, Sexsmith, AB



LOT
12



13

SDC **GROVER** 22G

MC805528 SDC 22G AUGUST 26, 2019 DEHORNED WHITE

SOS HOME GROWN 15C
SOS VESELKA PLD 124E
 SOS BABY GIRL 21B

HTA BRADACK 137Y
SDC ELLEN 35E
 SDC ZEZI 162Z

WINN MANS CHAVEZ 826Y
 SOS SPRINGSIDE'S ADELE167
 CSS SIR NAVIGATOR 20Y
 FFBB MOMMASGIRL PLD 930W
 HTA SENATOR 8130U
 HTA BRIDGET (R) 577R
 MXS IRISH CREAM 973W
 SDC CATALINA 33W

PERF	BW	WW	EPDS	CE	BW	WW	YW	MILK	MTL
	97	766		2.6	2.4	46	91	20	42

- A stout heifer's first calf out of a Bradack daughter from the Catalina Family
- Ranks in the top 20% of the breed for Carcass Weight

14

SDC **GO GETTER** 25G

SMC805473 SDC 25G AUGUST 30, 2019 SCURRED WHITE

SOS HOME GROWN 15C
SOS VESELKA PLD 124E
 SOS BABY GIRL 21B

HTA BRADACK 137Y
SDC EVA 29E
 SDC COLUMBIA 97R

WINN MANS CHAVEZ 826Y
 SOS SPRINGSIDE'S ADELE167
 CSS SIR NAVIGATOR 20Y
 FFBB MOMMASGIRL PLD 930W
 HTA SENATOR 8130U
 HTA BRIDGET (R) 577R
 SVY FREEDOM PLD 307N
 SDC MISS CINDY 45L

PERF	BW	WW	EPDS	CE	BW	WW	YW	MILK	MTL
	94	797		2.8	2.1	46	89	20	43

- A rugged Velselka son out of a first calving Bradack daughter
- Ranks in the top 20% of the breed for Carcass Weight.





15

SDC **GARRETT** 26G

QMC805359 SDC 26G AUGUST 30, 2019 DEHORNTED TAN

CHARHEAD'S MISTER MEL 24Z
WRANGLER LEADER 15D
SDC ALBA 6A

SPARROWS CARACAS 230S
SDC YARDENA 134Y
SDC SONORA 71R

CHARHEAD MISTER MEL 1X
CHARLA MOORE TAKEOFF 7T
MERIT ROUNDUP 9508W
SDC LADY YAKIRA 89Y
SPARROWS DURANGO 585P
SPARROWS SYMPHONY 230L
SVY FREEDOM PLD 307N
SDC MISS REBECCA 21G

PERF	BW	WW	EPDS	CE	BW	WW	YW	MILK	MTL
101	681		5.9	2.2	41	81	22	43	

- This red influence son of Leader combines five of the breeds great producing sires – Caracas, Durango, Alliance, Freedom and Red Ace
- A maternal brother, SDC Plain and Simple 27D was selected by Armstrong Farms, Erskine and SDC Austin 148A was selected by Two Bit Ranch Ltd., Fenn, Alberta

16

SDC **GRAHAM** 32G

MC805361 SDC 32G SEPTEMBER 3, 2019 DEHORNTED WHITE

WINN MANS SKAGGS 663X
SPARROWS CAMELOT 666D
SPARROWS SYMPHONY 430A

SPARROWS CARACAS 230S
SDC XENNA 13X
SDC TEMPTRESS 138T

MD ALI TRADE U1059
WINN MANS BEVERLY 663S
WINN MANS LANZA 610S
SPARROWS SYMPHONY 230Y
SPARROWS DURANGO 585P
SPARROWS SYMPHONY 230L
SVY FREEDOM PLD 307N
SDC ESTELLA 79L

PERF	BW	WW	EPDS	CE	BW	WW	YW	MILK	MTL
102	717		4.9	1.9	49	103	23	48	

- Ranks in the top 15% of the breed for Yearling and Carcass Weight, the top 20% for Total Maternal and the top 25% for Weaning Weight
- Bred-in longevity in this youngster
- A maternal brother, SDC Bentley 60Z, was selected by Lambert Livestock, Burns Lake, British Columbia





LOT 17

17

SDC **GRANT** 36G

PMC805362 SDC 36G SEPTEMBER 7, 2019 POLLED WHITE

WINN MANS SKAGGS 663X
SPARROWS CAMELOT 666D
 SPARROWS SYMPHONY 430A

LT BLUEGRASS 4017 P
SDC DESTINY 36D
 SDC BIANCA 22B

MD ALI TRADE U1059
 WINN MANS BEVERLY 663S
 WINN MANS LANZA 610S
 SPARROWS SYMPHONY 230Y
 LT ASSERTION 1277P
 LT PEARL'S BREEZE 2236 P
 WRANGLER FRENCHIE 2X
 SDC MISS BEVERLY 60N

PERF	BW	WW	EPDS	CE	BW	WW	YW	MILK	MTL
	98	750		6.3	0.9	46	94	21	43

- Ranks in the top 10% of the breed for Marbling
- He goes back to the very predictable Hollywood cow family

18

SDC **GAME OVER** 37G

SMC805363 SDC 37G SEPTEMBER 8, 2019 SCURRED WHITE

WINN MANS SKAGGS 663X
SPARROWS CAMELOT 666D
 SPARROWS SYMPHONY 430A

MXS IRISH CREAM 973W
SDC ZEZE 162Z
 SDC CATALINA 33W

MD ALI TRADE U1059
 WINN MANS BEVERLY 663S
 WINN MANS LANZA 610S
 SPARROWS SYMPHONY 230Y
 ERIXON'S SPITFIRE 127T
 MXS BAILEY 232M
 SPARROWS CARACAS 230S
 SDC ABIGAIL 121S

PERF	BW	WW	EPDS	CE	BW	WW	YW	MILK	MTL
	97	710		4.0	2.5	50	104	21	46

- Ranks in the top 10% of the breed for Yearling Weight, the top 15% for Carcass Weight and the top 25% for Total Maternal, Weaning Weight and Rib-Eye
- A maternal brother, SDC Cosmos 15C, was selected by JK Albers Farm Ltd. Heisler, AB



LOT 18

19

SDC **GIMME A BREAK** 38G

MC805364 SDC 38G SEPTEMBER 8, 2019 DEHORNED WHITE

WINN MANS SKAGGS 663X
SPARROWS CAMELOT 666D
 SPARROWS SYMPHONY 430A

HTA BRADACK 137Y

SDC BONNIE 160B

SDC HOT STUFF 156T

MD ALI TRADE U1059
 WINN MANS BEVERLY 663S
 WINN MANS LANZA 610S
 SPARROWS SYMPHONY 230Y
 HTA SENATOR 8130U
 HTA BRIDGET (R) 577R
 SVY FREEDOM PLD 307N
 SDC WHITE PEARL 14N

PERF	BW	WW	PE EPDS	CE	BW	WW	YW	MILK	MTL
	105	753		4.5	1.8	53	109	25	52

- A high performance son of Sparrows Camelot out of a double bred Evolution daughter
- Ranks in the top 5% of the breed for Yearling and Carcass Weight and Total Maternal, the top 15% for Weaning Weight and Milk and the top 20% for Rib-Eye
- This multi-trait sire should not be overlooked



LOT 19

20

SDC **GO GET EM** 39G

QSMC805365 SDC 39G SEPTEMBER 10, 2019 SCURRED TAN

CHARHEAD'S MISTER MEL 24Z
WRANGLER LEADER 15D
 SDC ALBA 6A

WRANGLER DOUBLESOT 11S

SDC WALKIRIA 146W

SDC SEREINA 11P

CHARHEAD MISTER MEL 1X
 CHARLA MOORE TAKEOFF 7T
 MERIT ROUNDUP 9508W
 SDC LADY YAKIRA 89Y
 PRO-CHAR MAXIM 38N
 PRO-CHAR LAKOTA 15P
 2UP PEUGEOT ET
 SDC ISS DUTCHESS 40L

PERF	BW	WW	PE EPDS	CE	BW	WW	YW	MILK	MTL
	100	731		5.8	2.6	44	84	17	39

- A maternal brother by Bradack, SDC Barelli 151D, was selected by Daniel Dodd, Morrin, Alberta



LOT 20

21

SDC **GUNNAR** 41G

QSMC805366 SDC 41G SEPTEMBER 11, 2019 SCURRED RED

CHARHEAD'S MISTER MEL 24Z
WRANGLER LEADER 15D
 SDC ALBA 6A

MXS VERMILLION 527R

SDC XINDI 65X

SDC ALY 113U

CHARHEAD MISTER MEL 1X
 CHARLA MOORE TAKEOFF 7T
 MERIT ROUNDUP 9508W
 SDC LADY YAKIRA 89Y
 SOS POLLED DETONATOR 8M
 MXS ESPEON 122L
 PINAY
 RKG BARBIE DOLL 125K

PERF	BW	WW	EPDS	CE	BW	WW	YW	MILK	MTL
	94	709		7.6	0.6	41	84	23	44

- A dark red son of Leader out of a top producing family tracing back to Barbie Doll
- Ranks in the top 15% of the breed for Fat, the top 20% for Rib-Eye and the top 30% for Calving Ease
- A maternal brother, SDC Brutus 26D, was selected by Charlite Farms, Amisk, Alberta and SDC Cherokee 34C, was selected by Davies Livestock Co. Ltd., Medicine Hat, Alberta
- Jay Dawn Farms, Sexsmith, Alberta selected a maternal daughter



LOT 21



LOT
22

22

SDC **GERONIMO** 45G

MC805474 SDC 45G SEPTEMBER 15, 2019 DEHORNED WHITE

SOS HOME GROWN 15C
SOS VESELKA PLD 124E
SOS BABY GIRL 21B

HTA BRADACK 137Y
SDC EVITA 28E
SDC WILLOW 140W

WINN MANS CHAVEZ 826Y
SOS SPRINGSIDE'S ADELE167
CSS SIR NAVIGATOR 20Y
FFBB MOMMASGIRL PLD 930W
HTA SENATOR 8130U
HTA BRIDGET (R) 577R
WRANGLER DOUBLESHOT 11S
SDC WHITE PEARL 14N

PERF	BW	WW	EPDS	CE	BW	WW	YW	MILK	MTL
	95	768		3.1	2.4	46	91	20	43

- Out of a first calf heifer tracing back to White Pearl of the Barbie Doll foundation family
- Ranks in the top 25% of the breed for Carcass Weight

23

SDC **GIBSON** 47G

PMC805532 SDC 47G SEPTEMBER 18, 2019 POLLED WHITE

SOS HOME GROWN 15C
SOS VESELKA PLD 124E
SOS BABY GIRL 21B

HTA BRADACK 137Y
SDC ELISHA 25E
SDC ULTIMA 104U

WINN MANS CHAVEZ 826Y
SOS SPRINGSIDE'S ADELE167
CSS SIR NAVIGATOR 20Y
FFBB MOMMASGIRL PLD 930W
HTA SENATOR 8130U
HTA BRIDGET (R) 577R
WRANGLER DOUBLESHOT 11S
SDC MISS SIERRA 38L

PERF	BW	WW	EPDS	CE	BW	WW	YW	MILK	MTL
	92	750		1.2	2.9	48	94	19	43

- A Veselka out of a red Bradack first calver going back to the great Hollywood family
- Ranks in the top 15% of the breed for Carcass Weight, the top 25% for Yearling Weight and Rib-Eye and the top 30% for Weaning Weight



LOT
23



24

SDC **GORDON** 49G

SMC805543	SDC 49G	SEPTEMBER 20, 2019	SCURRED WHITE
CHARHEAD'S MISTER MEL 24Z	CHARHEAD MISTER MEL 1X		
WRANGLER LEADER 15D	CHARLA MOORE TAKEOFF 7T		
SDC ALBA 6A	MERIT ROUNDUP 9508W		
	SDC LADY YAKIRA 89Y		
	HTA SENATOR 8130U		
HTA BRADACK 137Y	HTA BRIDGET (R) 577R		
SDC DIXIE 32D	MXS VERMILLION 527R		
SDC JAMIE 9T	SDC GRACE 84R		

PERF	BW	WW	PE EPDS	CE	BW	WW	YW	MILK	MTL
100	707		5.0	0.9	27	55	11	24	

- A moderate framed Leader son out of a red Bradack daughter
- Ranks in the top 25% of the breed for Rib-Eye

25

SDC **GENTLEMAN** 52G

MC805368	SDC 52G	SEPTEMBER 21, 2019	DEHORND WHITE
SOS HOME GROWN 15C	WINN MANS CHAVEZ 826Y		
SOS VESELKA PLD 124E	SOS SPRINGSIDE'S ADELE167		
SOS BABY GIRL 21B	CSS SIR NAVIGATOR 20Y		
	FFBB MOMMASGIRL PLD 930W		
	HTA SENATOR 8130U		
HTA BRADACK 137Y	HTA BRIDGET (R) 577R		
SDC DEANNA 23D	MXS IRISH CREAM 973W		
SDC ZINNIA 38Z	SDC WHY NOT 137W		

PERF	BW	WW	PE EPDS	CE	BW	WW	YW	MILK	MTL
104	777		2.0	2.8	45	91	20	43	

- A high value carcass sire prospect out of the Barbie Doll Family
- Ranks in the top 20% of the breed for Carcass Weight and the top 30% for Rib Eye, Fat and Marbling



LOT 25



26

SDC **GET RHYTHM** 55G

MC805369 SDC 55G OCTOBER 5, 2019 DEHORNED WHITE

SOS HOME GROWN 15C
SOS VESELKA PLD 124E
 SOS BABY GIRL 21B

HTA BRADACK 137Y
SDC CAMILLA 19C
 SDC IT AIN'T EASY 124U

WINN MANS CHAVEZ 826Y
 SOS SPRINGSIDE'S ADELE167
 CSS SIR NAVIGATOR 20Y
 FFBB MOMMASGIRL PLD 930W
 HTA SENATOR 8130U
 HTA BRIDGET (R) 577R
 SPARROWS CARACAS 230S
 SDC OLYMPIA 4R

PERF	BW	WW	EPDS	CE	BW	WW	YW	MILK	MTL
97	695		EPDS	1.9	2.6	46	92	22	45

- Out of a high maternal family with longevity. His mother ranks in the top 2% for Milk and Total Maternal
- He ranks in the top 15% for Carcass Weight and the top 30% for Yearling Weight

27

SDC **GAME FACE** 56G

PMC805371 SDC 56G OCTOBER 7, 2019 POLLED WHITE

CHARHEAD'S MISTER MEL 24Z
WRANGLER LEADER 15D
 SDC ALBA 6A

HTA BRADACK 137Y
SDC DAKOTA 17D
 SDC ZETTI 143Z

CHARHEAD MISTER MEL 1X
 CHARLA MOORE TAKEOFF 7T
 MERIT ROUNDUP 9508W
 SDC LADY YAKIRA 89Y
 HTA SENATOR 8130U
 HTA BRIDGET (R) 577R
 MXS IRISH CREAM 973W
 SDC JAMIE 9T

PERF	BW	WW	EPDS	CE	BW	WW	YW	MILK	MTL
95	706		EPDS	6.9	1.7	44	90	22	44

- Ranks in the top 30% of the breed for Carcass Weight and Rib-Eye
- Out of a red Bradack that traces back to the Hollywood family





28

SDC **GEORGE** 60G

PMC805372 SDC 60G OCTOBER 10, 2019 POLLED WHITE

WINN MANS SKAGGS 663X
SPARROWS CAMELOT 666D
 SPARROWS SYMPHONY 430A

HTA BRADACK 137Y
SDC BELINDA 154B
 SDC SARIKA 4S

MD ALI TRADE U1059
 WINN MANS BEVERLY 663S
 WINN MANS LANZA 610S
 SPARROWS SYMPHONY 230Y
 HTA SENATOR 8130U
 HTA BRIDGET (R) 577R
 SVY FREEDOM PLD 307N
 RGP MADOONNA 2M

PERF	BW	WW	PE EPDS	CE	BW	WW	YW	MILK	MTL
101	705		4.5	1.8	50	105	23	48	

- The youngest bull in the sale and one that needs consideration
- Out of the Madoonna family
- Ranks in the top 10% of the breed for Yearling and Carcass Weight, the top 20% for Rib-Eye and Total Maternal and the top 25% for Weaning Weight

29

SDC **FELIX** 64F

PMC805454 SDC 64F NOVEMBER 5, 2018 POLLED WHITE

WINN MANS CUERVO 4A
MCTAVISH WORTH 113D
 PLEASANT DAWN MAGGIE85X

SDC BORN COUNTRY 137B
SDC DARLA 53D
 SDC BONNY 165B

SPARROWS BIRMINGHAM 758T
 WINN MANS VANESSA 9104W
 PLEASANT DAWN MAGNUM 56T
 PLEASANT DAWN STAR 185P
 MXS IRISH CREAM 973W
 SDC LADY YAKIRA 89Y
 HTA BRADACK 137Y
 SDC ZEFFI 139Z

PERF	BW	WW	PE EPDS	CE	BW	WW	YW	MILK	MTL
80	695		3.8	2.6	44	89	25	46	

- A different genetic package and excellent credentials
- Ranks in the top 20% of the breed for Milk, the top 25% for Total Maternal and the top 30% for Carcass Weight





SPRINGSIDE FARMS

MIKE PANASIUK | www.springsidefarms.com
(250) 832-8209 | mike.springsidefarms@gmail.com

Welcome

This year marks the eighth year that Springside Farms has partnered with the Corpataux family. We are excited to invite you all to the 24th annual Sandan Springside Bull Sale. We would like to start by extending our heartfelt thanks to Ursula, George, and the entire Corpataux family for the hospitality they have shown over the years.

2020 has been a year like no other amidst this global pandemic. Many of the fall shows were cancelled and there has been a great deal of uncertainty. We weren't entirely sure we would even be able to have an auction sale, but as it stands we're full steam ahead! That being said, we would like to highlight some of the changes that we've made in order to comply with health code standards and to keep our friends, family, and customers safe. First, we have moved our sale to the Stettler Agricultural Society. This venue will allow us to welcome our usual number of patrons while still being able to maintain social distancing between individuals. Secondly, due to the change in venue we've moved the date of our sale to the second Saturday in February, instead of the last Saturday.

Rest assured that you will find the best quality Charolais genetics that money can buy at the Sandan Springside bull sale. Charolais genetics continue to be increasing in demand year after year and quality Charolais bulls are becoming even more highly sought after. Our bull sale continues to be one of the top 5 bull sales in Canada and this year will be no exception to the quality of Charolais bulls that will be on offer. In over 30 years of raising bulls, I dare say this is one of our best line-ups to date! Whether you're a rancher wanting to top the market every fall or a purebred breeder looking to elevate your program, we have a prospect that's right for you. At Springside we truly value our customers and strive to produce the highest quality product. That's why we'd love to hear from you and find out what your program requires and how we can work together to elevate it to the next level.

Please join us on February 13, 2021 at the 24th annual Sandan Springside Bull Sale. On offer are 100 bulls to suit anyone's program. We have a BULL FOR EVERY BUDGET, and a BULL FOR EVERY PROGRAM. Contact me if you'd like to talk about how Charolais genetics can enhance your program and elevate your profitability on sale day. What are you waiting for? Put that Charolais stamp on your calves and #beidentifiable.

Mike

We invite you, to come and view the bulls at Sandan Charolais from February 8th to the 11th from 1PM - 5PM *(please phone or text in advance)* or at the Stettler Agriplex on February 12th. We are happy to make alternate bidding arrangements for those who are unable to attend the sale for any reason. Please also note that we are dedicated to keeping our family, friends, and customers safe and will be adhering to all health precautions; therefore we ask anyone attending sale date to please wear a face mask, practice hand hygiene, and maintain social distancing.

CE CALVING EASE SCORES EXPLAINED

* Cows Only

** Cows & Mature Heifers

*** Heifer Approved



SOS HEFNER PLD 33H

SOS 33H | REG # **PMC794186** | DOB **JANUARY 10, 2020** | **POLLED** | **WHT**

LT LEDGER 0332 P
SOS APEX PLD 139F
 TMJF BERYLE 447B
 WINN MANS CHAVEZ 826Y
SOS DESIRAE PLD 7F
 PZC TR DESIRAE 012

BW: **89**
 ACT WW: **1015**
 ADJ 205: **978**

CE

CE	BW	WW	YW	MILK	MTL
7.5	-0.2	44	89	17	39

30

HOMO POLLED

It is with great anticipation we introduce our first Apex calves. Hefner is a stud of a bull, masculine, long bodied, wide based, deep bodied with the herd bull presence. His Chavez two-year-old dam is **FLAWLESS**. 33H was Champion Charolais bull calf at the Lloyd Stockade King of the Ring bull show, and a member of the Reserve pen of 3 at the Alberta Select in Red Deer. He may be one of **THE BEST** bulls we have **EVER** sold. **SELLING ¾ INTEREST FULL POSSESSION**



SOS DESIRAE PLD 7F - Dam of Lot 30



SOS APEX PLD 139F - 15 SONS SELL!
 Sire of Lot's 30 - 38, 40 - 43, 46 & 97



This calf just keeps getting better and better. 18H is a rugged, wide hipped ranch bull that moves like a cat! His Dam SOS Desirae 1H was the high selling female in Canada last year at \$50,000 to Rancho ADE from Jalisco, Mexico. Because they were at Davis Raridan all summer getting flushed, it made sense to bring this high calibre individual back to the ranch for the bull sale.

OWNED WITH RANCHO ADE, S.P.R. DE R.L. DE C. V.

31

SOS HACKSAW 18H

SOS 18H | REG # **MC799353** | DOB **JANUARY 4, 2020** | **POLLED** | **WHT**

LT LEDGER 0332 P

SOS APEX PLD 139F

TMJF BERYLE 447B

WINN MANS CHAVEZ 826Y

SOS DESIRAE PLD 1F

PZC TR DESIRAE 012

BW: **87**

ACT WW: **910**

ADJ 205: **866**

CE

**

CE	BW	WW	YW	MILK	MTL
9.2	-0.8	42	85	17	38



SOS DESIRAE PLD 1F - Dam of Lot 31



PZC TR DESIRAE 012 - Maternal grand dam of Lot's 30 & 31



SOS PANDEMIC 168H

32

Quiet possibly one of THE BEST bulls to sell this spring! A younger bull in the sale but check out that whopping 205-day weight. A deep, soggy, soft made bull with loads of natural thickness. Backed by a prolific dam that has a tremendous show record behind her. 168H was People's Choice at the Alberta Select in Red Deer and Reserve Champion Bull at Lloyd Stockade.

SELLING ¾ INTEREST FULL POSSESSION
OWNED WITH ALTON CENTURY FARMS

SOS 168H | REG # **MC799342** | DOB **FEBRUARY 27, 2020** | **POLLED** | **WHT**

LT LEDGER 0332 P
SOS APEX PLD 139F
TMJF BERYLE 447B
GERRARD PASTOR 35Z
SOS PEACHES 42B
ALT SPUR ZOE 255W

BW: **92**
ACT WW: **946**
ADJ 205: **1033**

CE
*

CE	BW	WW	YW	MILK	MTL
5.4	1.0	50	93	21	46



SOS PEACHES 42B - Dam of Lot 32



SOS PEACHES 42B - Reserve National Champion Senior Female, The Royal 2016



HOMO POLLED

120H is the kind you want a whole pen of; hair, perfect feet and structure, amazing testicles, and a wonderful disposition. 120H will be a calving ease specialist. Raised by a spectacular 2-year-old female and from a great cow family. If any bull looks like his sire, APEX, SOS Hannibal 120H is that bull!

SELLING ¾ INTEREST AND FULL POSSESSION

33 SOS HANNIBAL PLD 120H

SOS 120H | REG # **MC800128** | DOB **FEBRUARY 11, 2020** | **POLLED** | **WHT**

LT LEDGER 0332 P
SOS APEX PLD 139F
TMJF BERYLE 447B

PH CALLAHAN 192C
SOS FRAPPUCCINO 69F
SOS ICE CAP 55X

BW: **84**
ACT WW: **930**
ADJ 205: **1019**

CE

CE	BW	WW	YW	MILK	MTL
9.2	-1.7	42	81	19	40



SOS FRAPPUCCINO 69F - Dam of Lot 33



PH CALLAHAN 192C - Maternal grand sire of Lot 33



SOS HUMDINGER 26H

34

A definite pen and pasture favorite and member of the Reserve Pen of 3 at the Alberta Select in Red Deer. A perfect footed, muscular, thick butted bull. Maternal brother to SOS Rage 128C, herd bull for Jamie Ehret of Flat Valley Charolais. SOS 26H will be one heck of a humdinger in your breeding pastures.

SOS 26H | REG # **MC799332** | DOB **JANUARY 8, 2020** | **POLLED** | **WHT**

LT LEDGER 0332 P
SOS APEX PLD 139F
 TMJF BERYLE 447B
 SVY PILGRIM PLD 655S
ALT SIERRA 80Y
 ALT SIERRA 54R

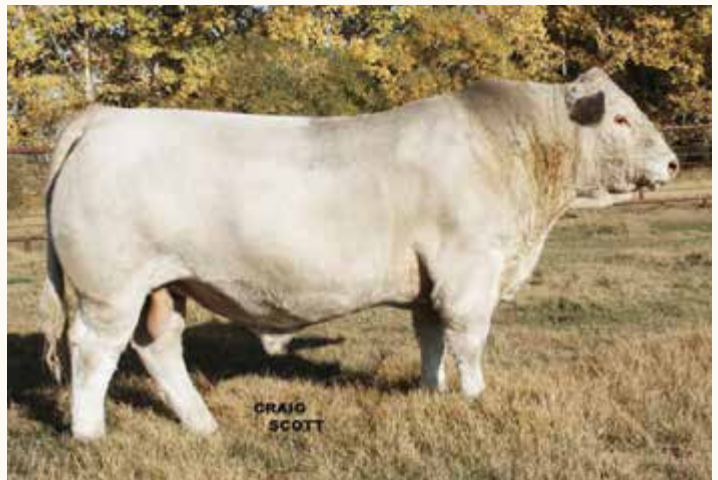
BW: **96**
 ACT WW: **1026**
 ADJ 205: **904**

CE
 *

CE	BW	WW	YW	MILK	MTL
6.0	0.9	44	81	14	36



ALT SIERRA 80Y - Dam of Lot 34



SVY PILGRIM PLD 655S - Maternal grand sire of Lot 34

35 SOS HODOR PLD 51H

SOS 51H | REG # MC794185 | DOB JANUARY 18, 2020 | POLLED | WHIT

**HOMO POLLED**

Grand Champion Bull at Lloydminster Stockade and Exhibition 2020. 51H is one of the deepest, thickest, widest bulls in this year's sale. His dam 57B is a no miss female and one of the best producers in the herd.

LT LEDGER 0332 P
SOS APEX PLD 139F
 TMJF BERYLE 447B
 VFF VIKSE ICE 189Z
SOS KHALEESI 57B
 SDC BACHOLERETTE 44W

BW: 94
 ACT WW: 1015
 ADJ 205: 930

CE

*

CE	BW	WW	YW	MILK	MTL
7.6	-0.1	40	81	17	38

**SOS HODOR PLD 51H****36 SOS HERSHEY PLD 28H**

SOS 28H | REG # MC799359 | DOB JANUARY 9, 2020 | POLLED | RED



LT LEDGER 0332 P
SOS APEX PLD 139F
 TMJF BERYLE 447B
 ERIXON'S SPITFIRE 127T
MXS HANNA 993W
 MXS HANNA 512R

BW: 86
 ACT WW: 990
 ADJ 205: 881

CE

**

CE	BW	WW	YW	MILK	MTL
9.3	-0.9	44	87	17	39

**MXS HANNA 993W - Dam of Lot 36**

Great footed, very athletic, sound made Apex son. His Dam MXS 993W is one of the BEST red cows we own, who has raised 5 herd bulls thus far in her career.

SOS 79H | REG # MC800091 | DOB JANUARY 24, 2020 | POLLED | WHT

SOS DUKE 79H 37

LT LEDGER 0332 P
SOS APEX PLD 139F
TMJF BERYLE 447B
SOS CHUCK WAGON 54C
SOS DUCHESS 66F
SOS PRINCESS KATE 33Y

BW: 76
ACT WW: 855
ADJ 205: 878

CE

CE	BW	WW	YW	MILK	MTL
6.3	-0.6	45	76	16	38

- super thick
- smooth made
- low BW & CE
- out of a 2-yr-old



SOS DUCHESS 66F - Dam of Lot 37



SOS 91H | REG # MC800102 | DOB JANUARY 29, 2020 | POLLED | WHT

SOS HEINEKEN 91H 38

LT LEDGER 0332 P
SOS APEX PLD 139F
TMJF BERYLE 447B
SOS HOOEY PLD 127D
SOS RIESLING 14F
SDC MISS MERLOT 9W

BW: 75
ACT WW: 797
ADJ 205: 840

CE

CE	BW	WW	YW	MILK	MTL
11.0	-1.7	39	79	13	32

- HEIFER BULL
- short gestation
- out of a 2-yr-old



SOS HOOEY PLD 127D - Maternal grand sire of Lot 38



SOS 83H | REG # MC800096 | DOB JANUARY 25, 2020 | POLLED | WHT

SOS MONSOON 83H 39

D R REVELATION 467
D R MONSOON 45
DR ALEXIS 412 ET
JWX CRACKER JACK 197C
MXS ESPEON 872F
MXS ESPEON 401B

BW: 77
ACT WW: 700
ADJ 205: 735

CE

CE	BW	WW	YW	MILK	MTL
7.9	-1.5	34	61	24	41

- HEIFER BULL
- top 15% for BW



D R MONSOON 45 - Sire of Lot 39



40 SOS HOUSTON 116H

SOS 116H | REG # MC800118 | DOB FEBRUARY 10, 2020 | POLLED | WHT



A bull that will sire a set of steers to top the calf market in the fall or throw in the feedlot all winter. Possesses that Apex hair, thickness, great feet and legs from Chuckwagon. Owned with ALTON CENTURY FARMS.

LT LEDGER 0332 P
SOS APEX PLD 139F
TMJF BERYLE 447B
SOS CHUCK WAGON 54C
SOS BRIDGET 133E
HTA BRIGET 12R

BW: 93
ACT WW: 780
ADJ 205: 823

CE
*

CE	BW	WW	YW	MILK	MTL
8.8	-1.0	44	87	19	41



SOS BRIDGET 133E - Dam of Lot 40

41 SOS HUCKLEBERRY 161H

SOS 161H | REG # MC800213 | DOB FEBRUARY 26, 2020 | POLLED | WHT



HUGE calving ease, yet solid performance. HEIFER BULL APPROVED!! SOS Huckleberry 161H will calve as good as any Angus bull, yet add that buckskin premium at the market.

LT LEDGER 0332 P
SOS APEX PLD 139F
TMJF BERYLE 447B
SVS NOBLEMAN 25N
SOS WINNIFRED 141F
MXS SUPREME HANNA 442B

BW: 83
ACT WW: 765
ADJ 205: 907

CE

CE	BW	WW	YW	MILK	MTL
11.1	-2.0	39	78	20	40



SVS NOBLEMAN 25N - Maternal grand sire of Lot 41

SOS 115H | REG # MC800115 | DOB FEBRUARY 10, 2020 | POLLED | WHT

SOS CALYPSO PLD 115H 42

LT LEDGER 0332 P
SOS APEX PLD 139F
TMJF BERYLE 447B
CEDARDALE ZEAL 125Z
SOS OLIVIA 57F
SOS EVELYN PLD 21D

BW: 81
ACT WW: 865
ADJ 205: 948

CE

CE	BW	WW	YW	MILK	MTL
9.8	-2.8	41	78	19	40



SOS OLIVIA 57F - Dam of Lot 42



HOMO POLLED

SOS 115H is quiet possibly the top Apex HEIFER BULL in the offering. Backed by three generations of heifer bulls; APEX, ZEAL, and KINGSTON. Sleep all night when you throw this bugger in your heifer pen. Ranks in the top 10% of the breed for calving ease. Owned with FISHER POLLED CHAROLAIS

SOS 88H | REG # MC800100 | DOB JANUARY 28, 2020 | POLLED | WHT

SOS HEARTFORD 88H 43

LT LEDGER 0332 P
SOS APEX PLD 139F
TMJF BERYLE 447B
CML GUSTO 662D
SOS FABULOUS 35F
ANCHOR XERA 3X

BW: 84
ACT WW: 870
ADJ 205: 906

CE	BW	WW	YW	MILK	MTL
12.3	-3.0	44	81	19	41

CE



CML GUSTO 662D - Maternal grand sire of Lot 43



We bred almost all our heifers to Apex and we are sure glad we did. Top 4% of the breed for calving ease. HEIFER BULL APPROVED, yet not sacrificing performance.





Jessica

2016 high selling female in Canada.
2017 Reserve National Champion Female.
The next 7 lots are all sons of SOS Jessica 34B.
Owned with McKeary Charolais



44 SOS SMOKESHOW PLD 167H

SOS 167H | REG # MC794321 | DOB FEBRUARY 27, 2020 | POLLED | WHT

WINN MANS SKAGGS 663X
SPARROWS ESCOBAR 429B
SPARROWS ANGEL 58T

WINN MANS CHAVEZ 826Y
SOS JESSICAH 34B
SOS PRINCESS KATE 33Y

BW: 92
ACT WW: 946
ADJ 205: 1033

CE
**

CE	BW	WW	YW	MILK	MTL
6.1	1.2	41	91	18	38

There was no question when this calf was born he was destined to be at the top of the bull pen. A definite pasture and pen favorite all year long. HERD BULL in the making with awesome hair, disposition and a huge butt with perfect testicles. He may be the best footed bull in the pen. When you find one built like Smokeshow, I highly recommend stepping up to the plate and owning him.

SELLING ¼ INTEREST FULL POSSESSION

45 SOS HAWKEYE 93H

SOS 93H | REG # MC799986 | DOB JANUARY 29, 2020 | POLLED | WHT



WINN MANS SKAGGS 663X
SPARROWS ESCOBAR 429B
SPARROWS ANGEL 58T

WINN MANS CHAVEZ 826Y
SOS JESSICAH 34B
SOS PRINCESS KATE 33Y

BW: 94
ACT WW: 785
ADJ 205: 752

CE
*

CE	BW	WW	YW	MILK	MTL
6.1	1.2	41	91	18	38

Moderate framed, thick and good haired prospect. Type of bull that will be very trouble free.

SOS 38H | REG # MC799981 | DOB JANUARY 11, 2020 | POLLED | WHT

SOS HOLSTER PLD 38H 46

WINN MANS SKAGGS 663X
SPARROWS ESCOBAR 429B
SPARROWS ANGEL 58T
WINN MANS CHAVEZ 826Y
SOS JESSICA 34B
SOS PRINCESS KATE 33Y

BW: 89
ACT WW: 1035
ADJ 205: 921

CE
*

CE	BW	WW	YW	MILK	MTL
6.1	1.2	41	91	18	38

HOMO POLLED

Bloodlines that have stood the test of time; reliable and proven genetics. Excellent length, testicles, feet and legs. DEFINITELY the quietest bull in the pen. Take advantage of this opportunity and make SOS Holster PLD 38H a part of your breeding program.



SOS 182H | REG # MC800004 | DOB MARCH 3, 2020 | POLLED | WHT

SOS HURRICANE 182H 47

WINN MANS SKAGGS 663X
SPARROWS ESCOBAR 429B
SPARROWS ANGEL 58T
WINN MANS CHAVEZ 826Y
SOS JESSICA 34B
SOS PRINCESS KATE 33Y

BW: 97
ACT WW: 900
ADJ 205: 1007

CE
**

CE	BW	WW	YW	MILK	MTL
6.1	1.2	41	91	18	38

Check out the 205 in this young herd sire prospect. Just to good not to put in the sale even though he is a March calf. 182H shows a lot of early maturity and is affordable insurance a few months down the road!





48 SOS HEMINGWAY PLD 19H

SOS 19H | REG # MC800175 | DOB JANUARY 4, 2020 | POLLED | WHT

KASS/CJB QUIET RIOT ET
KASS/CJB FAMOUS 6038 ET
KASS MS JOSIE T38

WINN MANS CHAVEZ 826Y
SOS JESSICAH 34B
SOS PRINCESS KATE 33Y

BW: 94
ACT WW: 974
ADJ 205: 846

CE

*

CE	BW	WW	YW	MILK	MTL
1.9	3.4	47	85	14	37

Three full siblings with incredible length, loads of performance and a lot of vigor. Last years ET brothers were sale topers selling to Dan Guhle, Daysland AB, and the Klatts at Golden Harvest Farms at Foremost, AB.

OWNED WITH PETER PETERS

49 SOS HAT TRICK PLD 23H

SOS 23H | REG # MC800178 | DOB JANUARY 7, 2020 | POLLED | WHT

KASS/CJB QUIET RIOT ET
KASS/CJB FAMOUS 6038 ET
KASS MS JOSIE T38

WINN MANS CHAVEZ 826Y
SOS JESSICAH 34B
SOS PRINCESS KATE 33Y

BW: 102
ACT WW: 949
ADJ 205: 834

CE

*

CE	BW	WW	YW	MILK	MTL
1.9	3.4	47	85	14	37



KASS/CJB FAMOUS 6038 ET - Sire of Lot's 48, 49 & 50



50 SOS HOLLAND PLD 21H

SOS 21H | REG # MC800177 | DOB JANUARY 5, 2020 | POLLED | WHT

KASS/CJB QUIET RIOT ET
KASS/CJB FAMOUS 6038 ET
KASS MS JOSIE T38

WINN MANS CHAVEZ 826Y
SOS JESSICAH 34B
SOS PRINCESS KATE 33Y

BW: 99
ACT WW: 1015
ADJ 205: 884

CE	BW	WW	YW	MILK	MTL
1.9	3.4	47	85	14	37

CE
*



SOS JESSICAH 34B - Pictured out on pasture, September 2020



Arguably the best Chavez son we've sold. His dam is truly the Queen of the SOS herd. Some notable offspring... SOS Jessicah 34B, high selling female in 2015 to McKeary Charolais, SOS Harvester 61C, National Class Winner & 2016 high seller to Wood River Charolais, SOS Goddess 21G, 2020 high selling female to Elder's & Wilgenbusch... just to name a few. Whether you sell bulls for a living, keep 1000 replacements or want to sell 1000 pound calves in the fall, it really boils down to Easy Math!

SELLING ¾ INTEREST FULL POSSESSION

51

SOS EASY MATH PLD 67H

SOS 67H | REG # **MC800087** | DOB **JANUARY 21, 2020** | **POLLED** | **WHT**

MERIT 7329T
WINN MANS CHAVEZ 826Y
 WINN MANS BREATHLESS 826U

SDC KING RANCH 70T
SOS PRINCESS KATE 33Y
 SOS JESSICA 1150S

BW: **96**
 ACT WW: **980**
 ADJ 205: **918**

CE
 **

CE	BW	WW	YW	MILK	MTL
4.1	1.9	44	86	14	36



SOS PRINCESS KATE 33Y - Cell phone picture taken just prior to calving January 2018



SOS GODDESS PLD 21G - 2020 high selling female in Canada, full sister to Lot 51

SOS 34H | REG # MC799362 | DOB JANUARY 10, 2020 | POLLED | WHT

SOS HANSEL 34H 52

MERIT 7329T
WINN MANS CHAVEZ 826Y
WINN MANS BREATHLESS 826U
MXS HEADLINE 904W
MXS CHERI 182Y
MXS CHERI 212G 768T

BW: 89
ACT WW: 903
ADJ 205: 802

CE
*

CE BW WW YW MILK MTL
7.7 0.5 41 81 11 31

- extremely thick
- huge testicles
- moderate



MXS CHERI 182Y - Dam of Lot 52



SOS 106H | REG # MC794189 | DOB FEBRUARY 4, 2020 | POLLED | RED

SOS HICKORY PLD 106H 53

MERIT 7329T
WINN MANS CHAVEZ 826Y
WINN MANS BREATHLESS 826U
LT PREDICTABLE WIND 2079
SDC XISI 78X
SDC SYDNEY 100T

BW: 95
ACT WW: 980
ADJ 205: 972

CE
**

CE BW WW YW MILK MTL
7.1 1.2 45 86 13 35

- HOMO POLLED
- sound footed
- one of the best tan bulls we've raised
- dam is trouble free & heavy milking



SDC XISI 78X - Dam of Lot 53



54 SOS HARPOON 7H

SOS 7H | REG # MC799346 | DOB JANUARY 2, 2020 | HORNED | WHT

MERIT 7329T
WINN MANS CHAVEZ 826Y
WINN MANS BREATHLESS 826U
SPARROWS LANDMARK 963W
MXS LANDMARK'S MAID 130Y
MXS MIKADO'S MAID 141L

BW: 95
ACT WW: 1140
ADJ 205: 981

CE
*

CE BW WW YW MILK MTL
4.4 0.2 51 99 16 42

The heaviest calf at weaning time and BIG-TIME PERFORMANCE bull. Loads of hair, good feet and legs and awesome disposition. He will sire moderate birth weight calves that will pound down the scale every fall at the auction mart.

55 SOS HAWK 42H

SOS 42H | REG # MC800078 | DOB JANUARY 13, 2020 | POLLED | WHT

MERIT 7329T
WINN MANS CHAVEZ 826Y
WINN MANS BREATHLESS 826U
GERRARD PASTOR 35Z
SOS PRETTY 30B
SOS TEDDY 239Y

BW: 107
ACT WW: 1065
ADJ 205: 958

CE
*

CE BW WW YW MILK MTL
6.1 -0.2 48 92 16 40

One of the larger framed bulls in the offering with extra size to handle mature cows.

56 SOS HEMI 87H

SOS 87H | REG # MC800099 | DOB JANUARY 28, 2020 | POLLED | WHT



Another attractive, big hipped, high performance Chavez son. Raised by a very productive 2-year-old Gusto daughter, who is a maternal sister to the dams of lot 1 & 2.

MERIT 7329T
WINN MANS CHAVEZ 826Y
WINN MANS BREATHLESS 826U
CML GUSTO 662D
SOS DESIRAE PLD 8F
PZC TR DESIRAE 012

BW: 88
ACT WW: 960
ADJ 205: 992

CE
*

CE	BW	WW	YW	MILK	MTL
5.3	1.1	43	89	17	38



SOS DESIRAE PLD 8F - Dam of Lot 56

57 SOS HITMAN PLD 37H

SOS 37H | REG # MC800077 | DOB JANUARY 11, 2020 | POLLED | WHT



SOS Hitman 37H will have many friends on sale day. Fantastic disposition, excellent testicles and backed by a proven hard-working mama cow.

WINN MANS CHAVEZ 826Y
SOS HOME GROWN 15C
SOS SPRINGSIDE'S ADELE167
RAWES PRESTON 112X
FVSF MS RAW 15A
FVSF MS SILVER 12P 8U

BW: 94
ACT WW: 1025
ADJ 205: 914

CE
*

CE	BW	WW	YW	MILK	MTL
3.6	1.9	55	103	11	39



FVSF MS RAW 15A - Dam of Lot 57

SOS 118H | REG # MC800122 | DOB FEBRUARY 10, 2020 | POLLED | WHT

SOS HOMERUN 118H 58

WINN MANS CHAVEZ 826Y
SOS HOME GROWN 15C
SOS SPRINGSIDE'S ADELE167
LT SUNDANCE 2251 PLD
MXS LANNA 633D
MXS HANNA 418B

BW: 101
ACT WW: 980
ADJ 205: 1005

CE
*

CE	BW	WW	YW	MILK	MTL
2.4	1.9	59	116	17	47

- Big pay weight!
- You will find him on sale day.
- Dam is a favorite
- top 3% for WW & YW



SOS 56H | REG # MC800083 | DOB JANUARY 18, 2020 | POLLED | RED

SOS MAHOGANY 56H 59

MERIT 7329T
WINN MANS CHAVEZ 826Y
WINN MANS BREATHLESS 826U
JWX TRIPLE PLAY 34T
WRANGLER MS PRINCESS 16Z
SDC SWISS PRINCESS 71T

BW: 96
ACT WW: 1018
ADJ 205: 932

CE
*

CE	BW	WW	YW	MILK	MTL
2.6	2.2	49	94	9	34

- Big buckskins!
- high performance
- red factor herd sire prospect



WRANGLER MS PRINCESS 16Z - Dam of Lot 59



60 SOS HOBBIT 152H

SOS 152H | REG # MC800158 | DOB FEBRUARY 24, 2020 | POLLED | WHT

WINN MANS CHAVEZ 826Y
SOS HOME GROWN 15C
SOS SPRINGSIDE'S ADELE167
SVY AD INVINCIBLE P 748T
MXS MEGARA 58X
MXS MEGARA 429P

BW: 89
ACT WW: 750
ADJ 205: 813

CE
*

CE	BW	WW	YW	MILK	MTL
2.5	2.9	52	95	13	38

No nonsense long bodied ranch bull.

61 SOS MATADOR 72H

SOS 72H | REG # MC800089 | DOB JANUARY 22, 2020 | POLLED | WHT

MERIT 7329T
WINN MANS CHAVEZ 826Y
WINN MANS BREATHLESS 826U
SOS POLLED DETONATOR 8M
MXS BEAUTY 256Z
MXS ALCATRAZ BEAUTY 840U

BW: 83
ACT WW: 830
ADJ 205: 772

CE
*

CE	BW	WW	YW	MILK	MTL
2.6	1.5	45	88	18	41

Length = pounds and 72H is one of the longest bodied yearlings in the sale. Great hair and a great disposition to boot.

62 SOS HARVEST PLD 146H

SOS 146H | REG # MC800152 | DOB FEBRUARY 22, 2020 | POLLED | WHT



WINN MANS CHAVEZ 826Y
SOS HOME GROWN 15C
SOS SPRINGSIDE'S ADELE167
SPARROWS LANDMARK 963W
MXS HANNA 418B
MXS HANNA 431P

BW: 104
ACT WW: 939
ADJ 205: 1000

CE *

CE	BW	WW	YW	MILK	MTL
-0.7	2.7	57	111	19	47

146H exhibits tremendous growth and ranks in the top 5% of the breed for growth. One of the younger bulls but definitely packs a lot of punch. From a top producing consistent cow family and a brother to the dam of lot 32.

63 SOS HUSKY 50H

SOS 50H | REG # MC800081 | DOB JANUARY 16, 2020 | POLLED | WHT



WINN MANS CHAVEZ 826Y
SOS HOME GROWN 15C
SOS SPRINGSIDE'S ADELE167
CSS SIR NAVIGATOR 20Y
SOS DORY 159E
SOS PEPPERMINT 24X

BW: 93
ACT WW: 925
ADJ 205: 917

CE *

CE	BW	WW	YW	MILK	MTL
1.9	3.4	50	96	12	37

SOS 50H suits his name! Extreme thickness yet smooth shouldered and extremely easy doing. A herd bull that will have the neighbours stopping the truck when he is standing in your field asking where you bought that bull.



SOS OVERHAUL 183H 64

183C is built like a brick! The thickest & widest calves in the offering. Even though he is the youngest bull in the sale, he is well worth a second look. He will sire a pen of steers that the buyers will be fighting over.

SOS 183H | REG # **MC803597** | DOB **MARCH 4, 2020** | **POLLED** | **WHT**

WINN MANS CHAVEZ 826Y
SOS HOME GROWN 15C
 SOS SPRINGSIDE'S ADELE167
 SOS POLLED DETONATOR 8M
MXS ESPEON 502C
 MXS ESPEON 281Z

BW: **92**
 ACT WW: **970**
 ADJ 205: **1021**

CE
 *

CE	BW	WW	YW	MILK	MTL
3.1	3.6	51	100	15	41



MXS ESPEON 502C - Dam of Lot 64



SOS HOME GROWN 15C - Sire of Lot's 57, 58, 60, 62, 63 & 64



HOMO POLLED

Leadoff Fortune Maker bull calf who has the ability to be an impact herd sire in your program. Awesome disposition, excellent feet and legs and a whopping performance machine. Maternal brother to SOS Chive On 112C topped our 2016 bull sale at \$22,000 to Circle Cee Charolais and Excel Charolais.

65 SOS HOMESTEAD PLD 162H

SOS 162H | REG # MC800171 | DOB FEBRUARY 26, 2020 | POLLED | WHT

CEDARDALE ZEAL 125Z
BRIDOR FORTUNE MAKER 6F
 BRIDOR YARDENA 25Y
 ROCKING HEART POWER 11X
SOS SPRINGSIDE'S GEORGIA 231Z
 SOS MAMMA MIA 78S

BW: 97
 ACT WW: 935
 ADJ 205: 1015

CE
 *

CE	BW	WW	YW	MILK	MTL
6.7	0.2	40	67	19	40



SOS SPRINGSIDE'S GEORGIA 231Z- Dam of Lot 65



SOS 122C- Maternal brother to Lot 65

SOS 108H | REG # MC800109 | DOB FEBRUARY 6, 2020 | POLLED | WHT

SOS HIGHLIGHT PLD 108H 66

CEDARDALE ZEAL 125Z
BRIDOR FORTUNE MAKER 6F
BRIDOR YARDENA 25Y
WINN MANS CHAVEZ 826Y
SOS FRONT AND CENTRE 32F
WRANGLER MS KRAKEN 101B

BW: 87
ACT WW: 915
ADJ 205: 923

CE

CE	BW	WW	YW	MILK	MTL
6.4	0.3	44	76	14	36

- HOMO POLLED
- HEIFER BULL
- out of a 2-yr-old



SOS FRONT AND CENTRE 32F - Dam of Lot 66



SOS 103H | REG # MC800106 | DOB FEBRUARY 3, 2020 | POLLED | WHT

SOS HAWTHORNE 103H 67

CEDARDALE ZEAL 125Z
BRIDOR FORTUNE MAKER 6F
BRIDOR YARDENA 25Y
SVY GRIZZLY PLD 521C
SOS RUMCHATA 71F
MXS DIANNE 71ST

BW: 87
ACT WW: 885
ADJ 205: 942

CE

CE	BW	WW	YW	MILK	MTL
7.4	-0.2	39	70	17	37

- HEIFER BULL
- out of a 2-yr-old
- great disposition



SOS 123H | REG # MC800132 | DOB FEBRUARY 13, 2020 | POLLED | WHT

SOS HOLLISTER 123H 68

CEDARDALE ZEAL 125Z
BRIDOR FORTUNE MAKER 6F
BRIDOR YARDENA 25Y
SOS HOOEY PLD 127D
SOS FRENCH KISS 94F
ALT KELLY 6X

BW: 71
ACT WW: 835
ADJ 205: 930

CE

CE	BW	WW	YW	MILK	MTL
6.7	-0.7	43	77	14	35

- HEIFER BULL
- low BW
- solid performance



BRIDOR FORTUNE MAKER 6F - Sire of Lots 65, 66, 67 & 68



Leadoff Chuckwagon herd sire prospect with tremendous thickness, muscling, hair and testicles. His Dam 419B is an exceptional herd bull producer with bull calves selling to Brad and Lucy Lohr, Len Laurence and Downie Lake Colony. Worth a second look on sale day, he will not disappoint.

69 SOS PRINCE CHARMING 22H

SOS 22H | REG # MC799355 | DOB JANUARY 5, 2020 | POLLED | WHT

SILVERSTREAM GEDDES G102
SOS CHUCK WAGON 54C
SDC BACHOLERETTE 44W

MERIT ROUNDUP 9508W
MXS SNOW WHITE 419B
MXS SNOW WHITE 977W

BW: 94
ACT WW: 1010
ADJ 205: 879

CE
*

CE	BW	WW	YW	MILK	MTL
4.1	0.3	48	92	13	37



MXS SNOW WHITE 419B- Dam of Lot 69



SOS CHUCK WAGON 54C- Sire of Lot's 69, 70, 71, 72 & 73

SOS 138H | REG # MC800145 | DOB FEBRUARY 19, 2020 | POLLED | WHT

SOS HOTROD 138H 70

SILVERSTREAM GEDDES G102
SOS CHUCK WAGON 54C
SDC BACHOLERETTE 44W

BW: 103
ACT WW: 845
ADJ 205: 886

CEDARDALE ZEAL 125Z
MXS ESMERALDA 548C
MXS ESMERALDA 261Z

CE
*

CE	BW	WW	YW	MILK	MTL
2.3	2.0	45	84	14	37



MXS ESMERALDA 548C - Dam of Lot 70



Definitely a younger calf but has a lot to offer. Like all our Chuckwagon's, tremendous hair, free moving, wide topped, and good performance. His Dam is a moderate, easy doing productive cow, and phenotypically spectacular.

SOS 58H | REG # MC800085 | DOB JANUARY 19, 2020 | POLLED | WHT

SOS HORTON 58H 71

SILVERSTREAM GEDDES G102
SOS CHUCK WAGON 54C
SDC BACHOLERETTE 44W

BW: 94
ACT WW: 960
ADJ 205: 920

CSS SIR NAVIGATOR 20Y
SOS ICE CAPP 124D
SOS ICE CAP 55X

CE
*

CE	BW	WW	YW	MILK	MTL
3.0	1.7	45	88	17	39

Best way to add consistency, is to buy a few of these Chuckwagon bull calves, they are all like peas in pod.



72 SOS HARLEY PLD 141H

SOS 141H | REG # MC800148 | DOB FEBRUARY 20, 2020 | POLLED | WHT



SILVERSTREAM GEDDES G102
SOS CHUCK WAGON 54C
SDC BACHOLERETTE 44W
CSS SIR GRIDMAKER 2W
ALT CHERYL 107A
ALT BONDAGE 107S

BW: 91
ACT WW: 855
ADJ 205: 903

CE *

CE	BW	WW	YW	MILK	MTL
5.2	1.0	46	85	16	40



ALT CHERYL 107A - Dam of Lot 72

107A does it again with another moderate, hairy herd bull. Brother to 123F that sold to Jean Lamson of Hanna, AB. Low birth weight yet solid performance. If I were a betting man I'd almost guarantee you're going to be keeping just about every female out of this calf.

73 SOS HALKIRK 31H

SOS 31H | REG # MC799361 | DOB JANUARY 10, 2020 | POLLED | WHT



SILVERSTREAM GEDDES G102
SOS CHUCK WAGON 54C
SDC BACHOLERETTE 44W
MERIT ROUNDUP 9508W
ALT PATRICIA 134B
ALT GAIL P 34X

BW: 91
ACT WW: 918
ADJ 205: 815

CE *

CE	BW	WW	YW	MILK	MTL
7.0	-0.5	47	89	14	38



SOS FREIGHTLINER PLD 3F - Full brother to Lot 73

Really wide topped, heavy muscled Chuckwagon prospect. Full brothers sold to Paul Murray at Provost and Ellen Ewasiuk at Holden. His dam is one of our favorite cows; super quiet, very fertile, and high producing.



SOS #HASHTAG 61H 74

HERDSIRE PROSPECT!! Our 2nd heaviest bull calf at weaning in early September and has really not missed a beat. His Dam 95C is one heck of a producer and her daughter SOS IVANKA 24G was the 2019 high selling heifer calf in Canada selling to Evan and Logan Jamieson. #performance #diposition #pounds

SOS 61H | REG # **MC800086** | DOB **JANUARY 20, 2020** | **POLLED** | **WHT**

WCR COMMISSIONER 593 P
ELDER'S CHANCELLOR 8019F
ELDER'S DUTCHESS 63D

CSS SIR NAVIGATOR 20Y
SOS CHA CHA 95C
FFBB MISS SILVA PLD 730T

BW: **82**
ACT WW: **1070**
ADJ 205: **1002**

CE

*

CE	BW	WW	YW	MILK	MTL
5.5	1.2	45	90	19	42



SOS CHA CHA 95C - Dam of Lot 74



SOS IVANKA 24G - Maternal sister to Lot 74, 2019 high selling heifer calf in Canada



HOMO POLLED

SALE FEATURE! HEIFER BULL APPROVED!

Top 10% in the breed for birth weight and all kinds of calving ease in his pedigree. His dam will quickly become a front pasture female and SOS Horizon 136H will be a huge impact BREEDER BULL.

SELLING 3/4 INTEREST FULL POSSESSION

75 SOS HORIZON PLD 136H

SOS 136H | REG # MC800143 | DOB FEBRUARY 19, 2020 | POLLED | WHT

WCR COMMISSIONER 593 P
ELDER'S CHANCELLOR 8019F
ELDER'S DUTCHESS 63D

PZC BOTTOMS UP 5011 ET
MXS TOPAZ 806F
MXS TOPAZ 615D

BW: 83
ACT WW: 950
ADJ 205: 1075

CE

CE	BW	WW	YW	MILK	MTL
10.3	-2.2	46	86	22	46



MXS TOPAZ 806F- Dam of Lot 75



ELDER'S CHANCELLOR 8019F- Sire of Lot's 74 - 89



SOS HERCULES 82H 76

Hairy, high performance, Chancellor bull who will have the size to cover a lot of cows. Chancellor is stamping his calves with excellent feet, legs, hair and length of body and 82H fits that mold. Maternal brother to SOS Apex 139F.

SOS 82H | REG # **MC802936** | DOB **JANUARY 25, 2020** | **POLLED** | **WHT**

WCR COMMISSIONER 593 P
ELDER'S CHANCELLOR 8019F
ELDER'S DUTCHESS 63D

MERIT ROUNDUP 9508W
TMJF BERYLE 447B
TMJF U-CALLED 198U

BW: **101**
ACT WW: **930**
ADJ 205: **878**

CE
*

CE	BW	WW	YW	MILK	MTL
9.4	-1.3	48	92	17	41



TMJF BERYLE 447B - Dam of Lot 76



SOS APEX 139F - Maternal brother to Lot 76

SOS 100H | REG # MC800104 | DOB FEBRUARY 2, 2020 | POLLED | WHT

SOS HEINZ 100H 77



WCR COMMISSIONER 593 P
ELDER'S CHANCELLOR 8019F
ELDER'S DUTCHESS 63D
CEDARLEA SUPREME GRID 16Z
MXS VALENCIA 472B
MXS VALENCIA 167Y

BW: 95
ACT WW: 980
ADJ 205: 954

CE

*

CE	BW	WW	YW	MILK	MTL
10.2	-0.8	47	90	17	40



- every son of 472B has made the sale
- very consistent

MXS VALENCIA 472B - Dam of Lot 77

SOS 57H | REG # MC800084 | DOB JANUARY 19, 2020 | POLLED | WHT

SOS HAVOC PLD 57H 78



WCR COMMISSIONER 593 P
ELDER'S CHANCELLOR 8019F
ELDER'S DUTCHESS 63D
WINN MANS CHAVEZ 826Y
SOS DOLLARAMA 88D
BWP AURORA 5A

BW: 97
ACT WW: 980
ADJ 205: 938

CE

*

CE	BW	WW	YW	MILK	MTL
7.2	0.5	49	94	17	42



- excellent feet, disposition and hair.
- beautiful dam

SOS DOLLARAMA 88D - Dam of Lot 78

79 SOS HOSTA 77H

SOS 77H | REG # MC800090 | DOB JANUARY 23, 2020 | POLLED | WHT

WCR COMMISSIONER 593 P
ELDER'S CHANCELLOR 8019F
ELDER'S DUTCHESS 63D
HTA ICE 19X
SOS WILD FLOWER 186Z
SOS SHEDAISSY 127S

BW: 95
ACT WW: 770
ADJ 205: 720

CE

*

CE	BW	WW	YW	MILK	MTL
5.0	1.7	50	97	19	43

Hosta 77H is out of a high producing Ice daughter who is a herd bull producer. Moderate, good footed, hairy prospect.

80 SOS EURIKA 107H

SOS 107H | REG # MC800108 | DOB FEBRUARY 5, 2020 | POLLED | WHT

WCR COMMISSIONER 593 P
ELDER'S CHANCELLOR 8019F
ELDER'S DUTCHESS 63D
SVY PILGRIM PLD 655S
ALT SERENE 25X
ALT AUTUMN 108S

BW: 103
ACT WW: 930
ADJ 205: 925

CE

*

CE	BW	WW	YW	MILK	MTL
4.9	1.1	50	90	19	44

Another larger framed, long bodied Chancellor bull with the size to breed a lot of cows in a large pasture. SOS Eurika 107H is the 9th consecutive calf for 25X and she is one of the heaviest milking most fertile cows in the herd.

SOS 175H | REG # MC803603 | DOB FEBRUARY 28, 2020 | POLLED | WHT

SOS HEARTLAND PLD 175H 81

WCR COMMISSIONER 593 P
ELDER'S CHANCELLOR 8019F
ELDER'S DUTCHESS 63D
SVY NORTHSTAR 153Y
MXS LUCY 478B
MXS LUCY MAUDE 41X

BW: 93
ACT WW: 950
ADJ 205: 1042

CE
*

CE	BW	WW	YW	MILK	MTL
5.4	1.8	50	92	22	46

- a bull I regard very highly
 - one of our top Chancellor calves
 - flawless dam
- SELLING 3/4 INTEREST FULL POSSESSION**



MXS LUCY 478B - Dam of Lot 81



SOS 165H | REG # MC800172 | DOB FEBRUARY 27, 2020 | POLLED | WHT

SOS EXECUTIVE PLD 165H 82

WCR COMMISSIONER 593 P
ELDER'S CHANCELLOR 8019F
ELDER'S DUTCHESS 63D
LT LEDGER 0332 P
WHITECAP MS ASTER 28C
HKS MS ASTER 197A

BW: 91
ACT WW: 849
ADJ 205: 927

CE

CE	BW	WW	YW	MILK	MTL
10.1	-1.0	49	95	16	41

- Heifer Bull
- Top 15% for BW & CE
- brothers have sold to Winsness Farms & Dave Gendre



WHITECAP MS ASTER 28C - Dam of Lot 82



83 SOS HICCUP 176H

SOS 176H | REG # MC803602 | DOB MARCH 1, 2020 | POLLED | WHT

WCR COMMISSIONER 593 P
ELDER'S CHANCELLOR 8019F
ELDER'S DUTCHESS 63D
SPARROWS LANDMARK 963W
MXS MADISON 509C
MXS MADISON 732T

BW: 103
ACT WW: 960
ADJ 205: 991

CE
*

CE	BW	WW	YW	MILK	MTL
5.9	1.4	49	95	25	49

176C boasts an excellent set of EPD's. He exhibits good length, hair and is a budget friendly bull.

84 SOS HAILSTORM 150H

SOS 150H | REG # MC800155 | DOB FEBRUARY 23, 2020 | POLLED | WHT

WCR COMMISSIONER 593 P
ELDER'S CHANCELLOR 8019F
ELDER'S DUTCHESS 63D
STEPPLER TANDEM 157A
G.BROS BOOTY RGCG 829E
G.BROS DUTCHESS 448B

BW: 95
ACT WW: 770
ADJ 205: 860

CE
*

CE	BW	WW	YW	MILK	MTL
9.0	-0.7	47	91	17	41

Another budget friendly Chancellor son who will do a great job breeding cows. Not the biggest bull in the sale but come June when a herd bull goes down, he will be ready to go to work.

85 SOS HUSTLER 44H

SOS 44H | REG # MC800079 | DOB JANUARY 14, 2020 | POLLED | WHT



WCR COMMISSIONER 593 P
ELDER'S CHANCELLOR 8019F
ELDER'S DUTCHESS 63D
VFF TIME OUT 172Y
VIKSE JULIET 81A
SDC JULIET 111W

BW: 101
ACT WW: 957
ADJ 205: 864

CE
**

CE	BW	WW	YW	MILK	MTL
6.2	1.1	51	96	19	44



VIKSE JULIET 81A - Dam of Lot 86

44H exhibits explosive growth and will sire a set of steers that we all make a living on. His dam is a very trouble-free cow who has raised numerous bull calves and her pedigree is stacked with some of the most reliable genetics. SOS Hustler 44H will get out there and get the job done.

86 SOS HOLLANDAISE 166H

SOS 166H | REG # MC800173 | DOB FEBRUARY 27, 2020 | POLLED | WHT



WCR COMMISSIONER 593 P
ELDER'S CHANCELLOR 8019F
ELDER'S DUTCHESS 63D
HRJ CROWD FAVOURITE 515C
WSS FANCY 818F
WSS MISS 350A

BW: 83
ACT WW: 845
ADJ 205: 1000

CE
*

CE	BW	WW	YW	MILK	MTL
5.9	0.8	46	91	20	43

Our 2-year-old cows worked really hard for us last year and 818F was certainly one of the hardest working! Super quiet, extremely long and a real pet best describes 166H. On a set of British cows, this bull will hit a homerun.

SOS 68H | REG # MC800088 | DOB JANUARY 21, 2020 | POLLED | WHT

SOS PIONEER 68H 87

WCR COMMISSIONER 593 P
ELDER'S CHANCELLOR 8019F
ELDER'S DUTCHESS 63D
CSS SIR NAVIGATOR 20Y
SOS FRENCH KISS PLD 172E
ALT AGUSTINA 73Y

BW: 102
ACT WW: 795
ADJ 205: 816

CE
*

CE	BW	WW	YW	MILK	MTL
4.5	1.2	48	90	20	44

- top end calf
- very correct, loose hided and great disposition.



SOS FRENCH KISS PLD 172E - Dam of Lot 87



SOS 52H | REG # MC800082 | DOB JANUARY 18, 2020 | POLLED | WHT

SOS FREIGHT TRAIN 52H 88

WCR COMMISSIONER 593 P
ELDER'S CHANCELLOR 8019F
ELDER'S DUTCHESS 63D
CJC BIG SKY X623 P
MXS MAUDE 284Z
MXS MAUDE 84X

BW: 106
ACT WW: 950
ADJ 205: 871

CE
*

CE	BW	WW	YW	MILK	MTL
6.1	0.4	54	105	20	46

- long & great hair coat
- out of a super functional dam



MXS MAUDE 284Z - Dam of Lot 88 & maternal grand dam of Lot 89

SOS 126H | REG # MC800138 | DOB FEBRUARY 14, 2020 | POLLED | WHT

SOS HURON 126H 89

WCR COMMISSIONER 593 P
ELDER'S CHANCELLOR 8019F
ELDER'S DUTCHESS 63D
SVY GRIZZLY PLD 521C
SOS CASHMERE 133F
MXS MAUDE 284Z

BW: 92
ACT WW: 935
ADJ 205: 1037

CE
*

CE	BW	WW	YW	MILK	MTL
5.7	1.1	49	99	20	44

126H is another low birth weight, hairy Chancellor calf. Raised by a 2-year-old Grizzly daughter from our top Big Sky daughter MXS 284Z.



RESERVE PEN OF 3
Featuring 2 sons of MXS Maude 284Z

90

SOS SHSH HEAVY DUTY PLD 835H

SOS 835H | REG # MC803777 | DOB FEBRUARY 4, 2020 | POLLED | WHT



Smooth made HD son with above average performance, excellent footed, sound, and free moving. Out of tremendous Crowd Favorite daughter.
OWNED WITH SLIDING HILLS CHAROLAIS

MERIT 9809W						BW: 108	
SHSH HD 14Y						ACT WW: 870	
SHSH MADONNA 21U						ADJ 205: 893	
HRJ CROWD FAVOURITE 515C							
SHSH SHANIA 9E						CE	
SHSH SHANIA 77U						*	
CE	BW	WW	YW	MILK	MTL		
1.6	2.0	58	110	25	54		



SHSH SHANIA 9E - Dam of Lot 90

91

SOS GUSTOV 803H

SOS 803H | REG # MC803780 | DOB JANUARY 4, 2020 | HORNED | WHT



Another solid deep bodied herd sire prospect that just keeps getting better everyday. His dam 13B, who we own with FLEMMING LIVESTOCK, is one of the NICEST cows we own and will be in our donor program in the not so distant future.

WINN MANS CHAVEZ 826Y						BW: 98	
SOS GRASSROOTS 113E						ACT WW: 915	
SOS SPRINGSIDE'S ADELE167						ADJ 205: 795	
LT LEDGER 0332 P							
C2 KENZIE 13B						CE	
KCM KENZIE 282Z						*	
CE	BW	WW	YW	MILK	MTL		
8.1	-0.4	44	87	15	37		



C2 KENZIE 13B -Dam of Lot 91

SOS 49H | REG # MC800080 | DOB JANUARY 15, 2020 | POLLED | WHT

SOS HOUDINI PLD 49H 92

HRJ CROWD FAVOURITE 515C
SVY WIZARD 707E
SVY STARSTRUCK 409B
SVY GRIZZLY PLD 521C
MXS GRIZZLY'S MAID 701E
MXS SPITFIRE'S MAID 27X

BW: 84
ACT WW: 900
ADJ 205: 851

CE

CE	BW	WW	YW	MILK	MTL
6.0	0.9	32	65	21	37



SVY GRIZZLY PLD 521C - Maternal grand sire of Lot 92



HOMO POLLED

This Wizard bull calf is extremely thick topped, heavy muscled and hairy. Excellent testicles, super disposition and from a very moderate perfect uddered Grizzly cow.

SOS 84H | REG # MC800098 | DOB JANUARY 25, 2020 | POLLED | WHT

SOS TAURUS 84H 93

WINN MANS SKAGGS 663X
SPARROWS AQUARIUS 493B
SPARROWS ANGEL EYES 458X
JWX DOWNTOWN 7C
MXS LUCY 707E
MXS LUCY 220Z

BW: 92
ACT WW: 740
ADJ 205: 736

CE
**

CE	BW	WW	YW	MILK	MTL
10.2	-0.9	45	90	23	46



SPARROWS AQUARIUS 493B - Sire of Lot 93



The only Aquarius calf in the offering and he is a long bodied, great haired calf. From a bigger high performing Downtown daughter who has a great udder and genuinely nice to work with.

SOS 97H | REG # MC800103 | DOB FEBRUARY 1, 2020 | POLLED | WHT



SOS HECTOR 97H 94

GERRARD PASTOR 35Z
WIESE'S EL PASO 14E
MXS BEYONCE' 44X
CHARHEAD'S MISTER MEL 24Z
WRANGLER MS SOUR PUSS 23D
WRANGLER MS TRIPLEPLAY44X

BW: 104
ACT WW: 794
ADJ 205: 786

CE
*

CE	BW	WW	YW	MILK	MTL
3.3	0.9	44	84	24	47

Great hair, awesome feet, huge testicles, lots of potential in this calf.

SOS 114H | REG # MC800113 | DOB FEBRUARY 9, 2020 | POLLED | WHT



SOS WISHBONE 114H 95

GERRARD PASTOR 35Z
WIESE'S EL PASO 14E
MXS BEYONCE' 44X
CHARHEAD'S MISTER MEL 24Z
WRANGLER EVETTA 40D
GERRARD EVETTA 25A

BW: 106
ACT WW: 690
ADJ 205: 708

CE
*

CE	BW	WW	YW	MILK	MTL
3.7	0.7	46	88	26	49

Lots of milk in this calf's pedigree. 1/4 Full French.

SOS HELSINKI 170H

96

SOS 170H | REG # MC800174 | DOB FEBRUARY 27, 2020 | POLLED | WHT

MERIT ROUNDUP 9508W
LEGACYS TOUCHDOWN 24D
PCC MISS PRAIRIE COVE942W

ERIXON'S SPITFIRE 127T
MXS MEGARA 365A
MXS MEGARA 36X

BW: 91
ACT WW: 795
ADJ 205: 866

CE

*

CE	BW	WW	YW	MILK	MTL
4.6	1.0	40	85	16	36

Long bodied, curly haired Touchdown son. His dam is our heaviest milking Spitfire cow with a picture perfect udder.

SOS HUNTER 124H

97

SOS 124H | REG # MC800135 | DOB FEBRUARY 13, 2020 | POLLED | WHT

LT LEDGER 0332 P
SOS APEX PLD 139F
TMJF BERYLE 447B

GERRARD PASTOR 35Z
MVY RHONDA 11D
MVY RHONDA 1Y

BW: 101
ACT WW: 780
ADJ 205: 814

CE

*

CE	BW	WW	YW	MILK	MTL
8.4	-1.1	47	89	24	48

Another very long bodied, solid performance type bull. Sound footed and excellent EPD's

SOS EL PASO 89H

98

SOS 89H | REG # MC800101 | DOB JANUARY 28, 2020 | POLLED | WHT

GERRARD PASTOR 35Z
WIESE'S EL PASO 14E
MXS BEYONCE' 44X
CHARHEAD'S MISTER MEL 24Z
WRANGLER MS ZEIDA 36D
SDC ZEIDA 140Z

BW: 98
ACT WW: 775
ADJ 205: 756

CE

*

CE	BW	WW	YW	MILK	MTL
6.0	0.7	41	80	25	46

Thick butted, smooth fronted El Paso son. Top 15% for milk in the breed.

SOS HUSH PUPPY 128H

99

SOS 128H | REG # MC800141 | DOB FEBRUARY 14, 2020 | POLLED | WHT

GERRARD PASTOR 35Z
WIESE'S EL PASO 14E
MXS BEYONCE' 44X
WRANGLER TOP GUN 42B
WRANGLER MS MELENE 26D
WRANGLER MS MEL 9B

BW: 102
ACT WW: 716
ADJ 205: 752

CE

*

CE	BW	WW	YW	MILK	MTL
9.1	-1.8	36	75	29	47

These El Paso calves come from a package of cows we bought from a good friend JIM WIESE. El Paso is a Pastor son from the dam of PCC Rome. Calving ease and short gestation are bred into him and a plus 29 milk EPD means you may want to keep a bunch of his daughters.



**Return Undeliverable
Canadian Addresses To:**

**T Bar C Cattle Co. Ltd.
Box 2330
Warman, SK S0K 4S0**



24th Annual Bull Sale

Saturday, February 13, 2021 • 1:30 PM at the Stettler Agriplex

www.sandancharolais.com